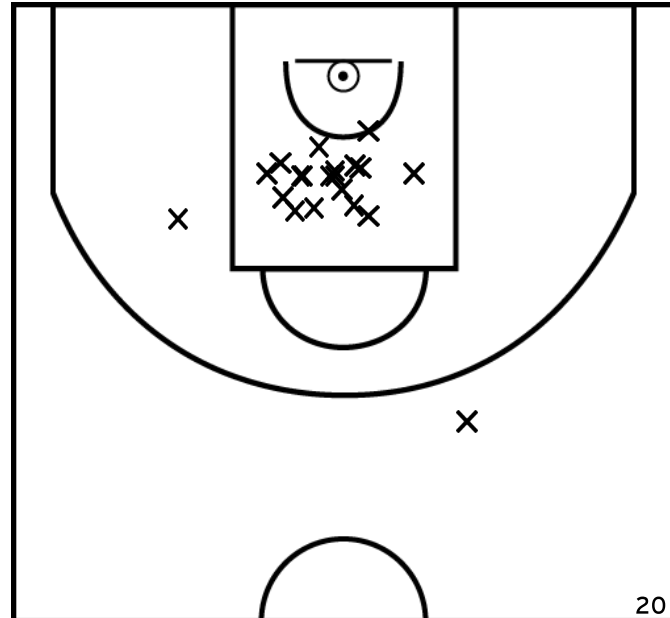
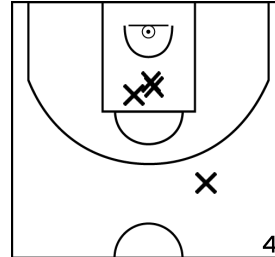


Rencontre: 4234 Date: 16/04/23 Heure: 14:00  
 Arbitre: PERROT A BENETEAU A

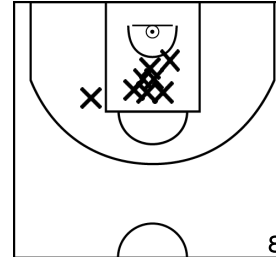
ÉQUIPE IE - CTC POLE WEST NANTAIS - I.B.C. - Indre Basket Club - 3 (A)



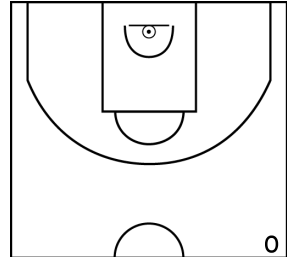
PÉRIODE 1



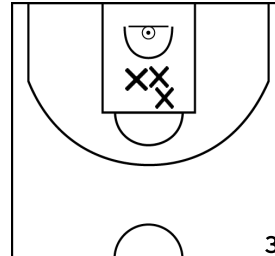
PÉRIODE 3



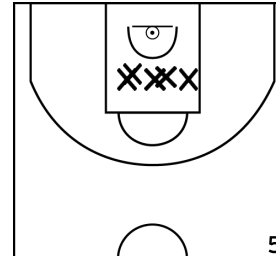
PROLONGATIONS



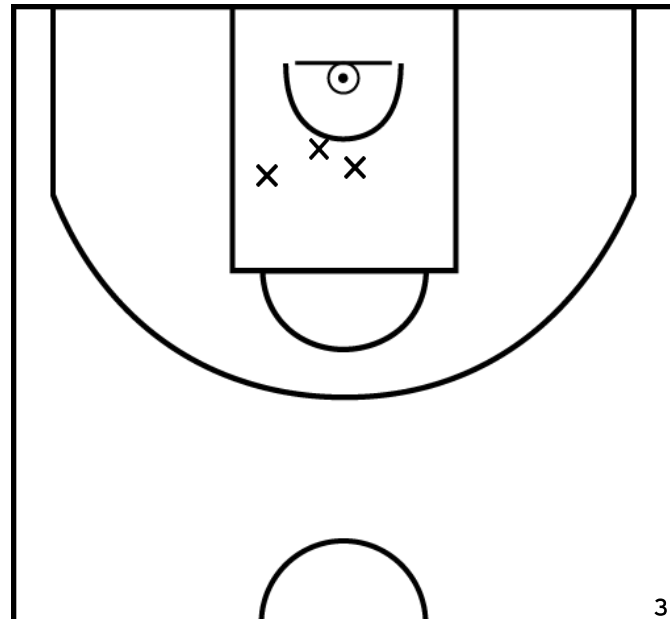
PÉRIODE 2



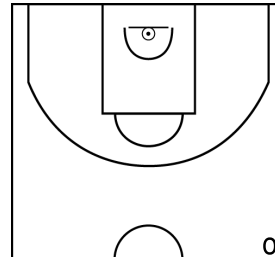
PÉRIODE 4



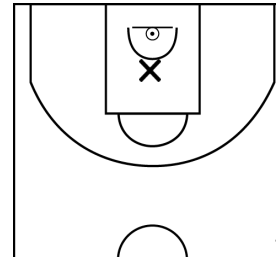
DREYFUS M. - IE - CTC POLE WEST NANTAIS - I.B.C. - INDRE BASKET CLUB - 3 (A)



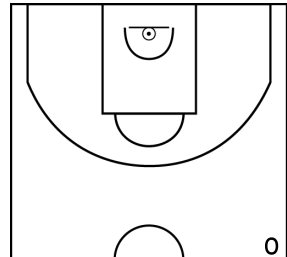
PÉRIODE 1



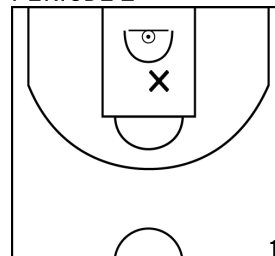
PÉRIODE 3



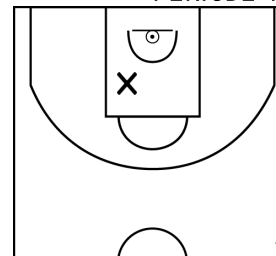
PROLONGATIONS



PÉRIODE 2

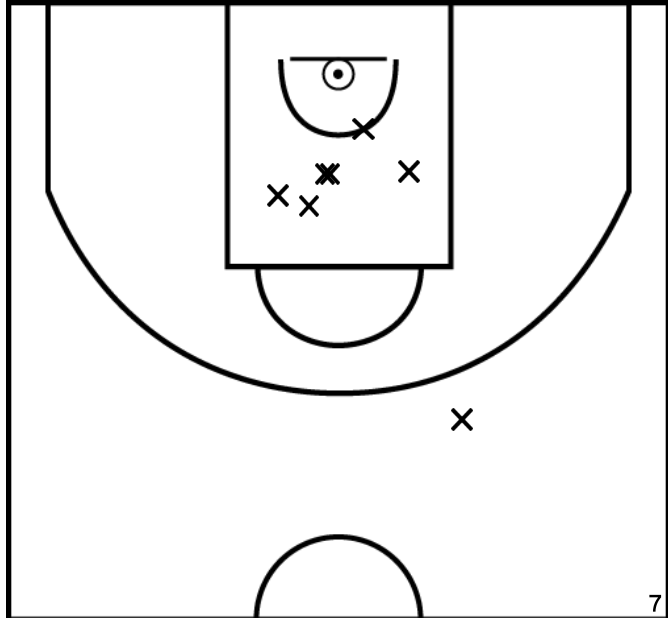


PÉRIODE 4

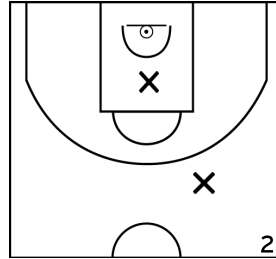


Rencontre: 4234 Date: 16/04/23 Heure: 14:00  
 Arbitre: PERROT A BENETEAU A

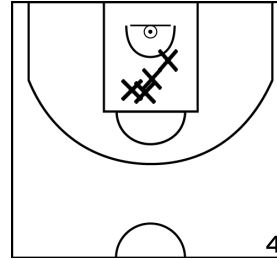
EDELIN A. - IE - CTC POLE WEST NANTAIS - I.B.C. - INDRE BASKET CLUB - 3 (A)



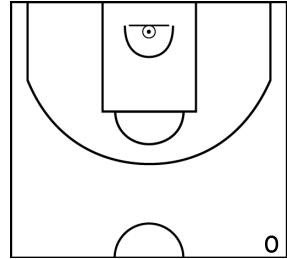
PÉRIODE 1



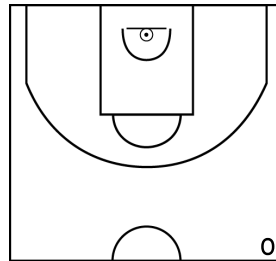
PÉRIODE 3



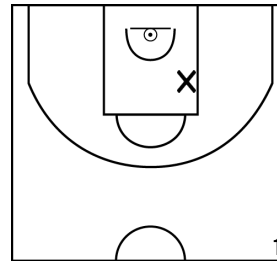
PROLONGATIONS



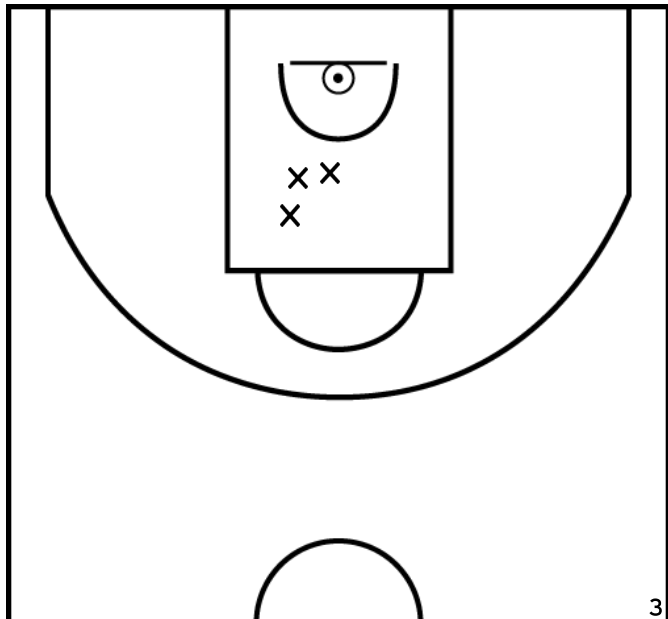
PÉRIODE 2



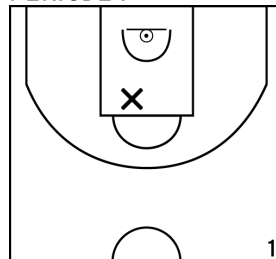
PÉRIODE 4



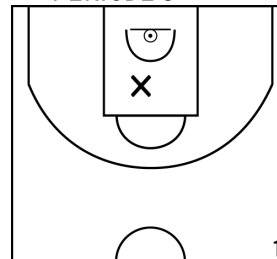
MARSAIS P. - IE - CTC POLE WEST NANTAIS - I.B.C. - INDRE BASKET CLUB - 3 (A)



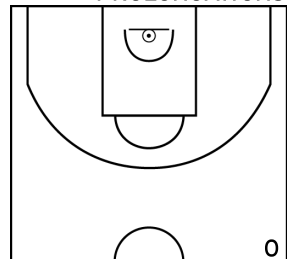
PÉRIODE 1



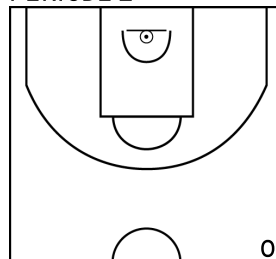
PÉRIODE 3



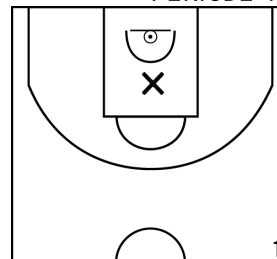
PROLONGATIONS



PÉRIODE 2

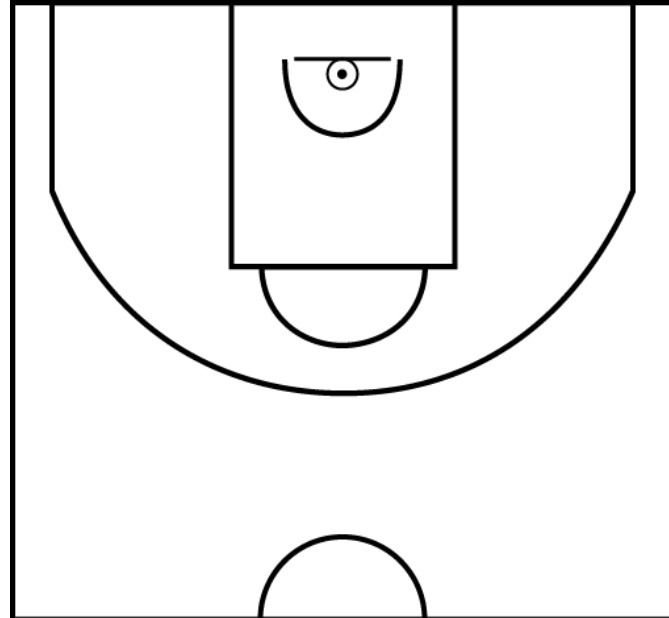


PÉRIODE 4

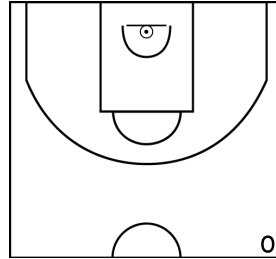


Rencontre: 4234 Date: 16/04/23 Heure: 14:00  
 Arbitre: PERROT A BENETEAU A

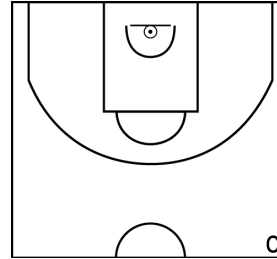
PISTORESI C. - IE - CTC POLE WEST NANTAIS - I.B.C. - INDRE BASKET CLUB - 3 (A)



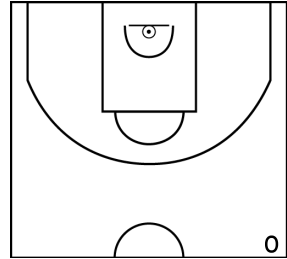
PÉRIODE 1



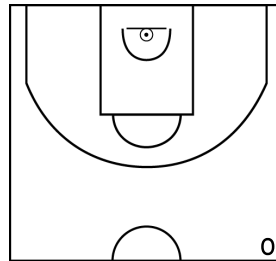
PÉRIODE 3



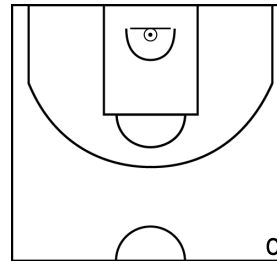
PROLONGATIONS



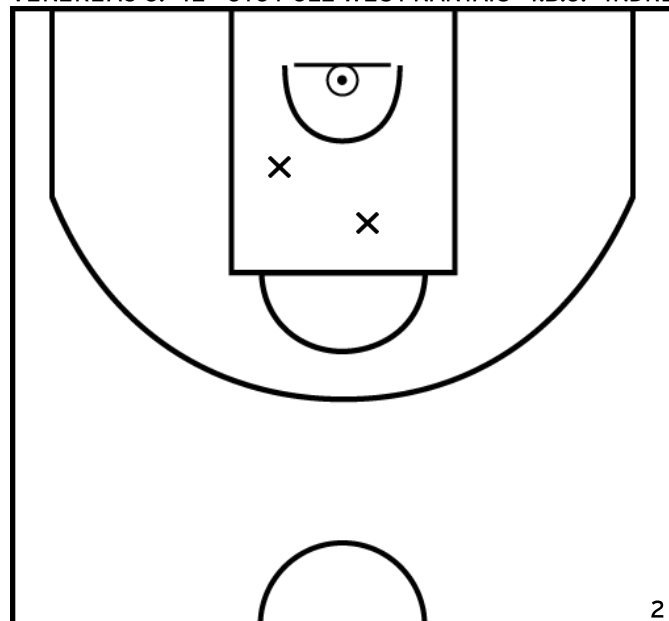
PÉRIODE 2



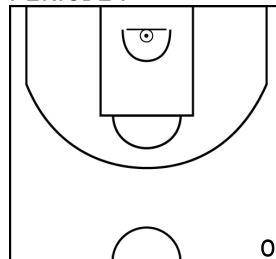
PÉRIODE 4



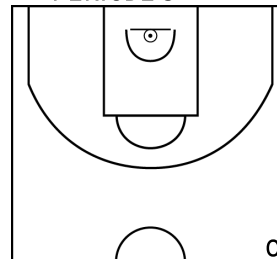
VENEREAU C. - IE - CTC POLE WEST NANTAIS - I.B.C. - INDRE BASKET CLUB - 3 (A)



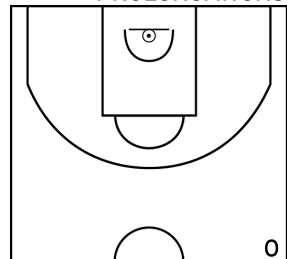
PÉRIODE 1



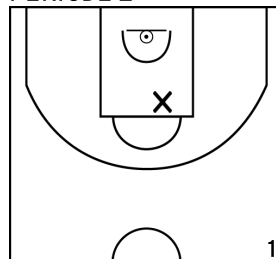
PÉRIODE 3



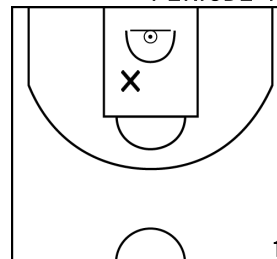
PROLONGATIONS



PÉRIODE 2

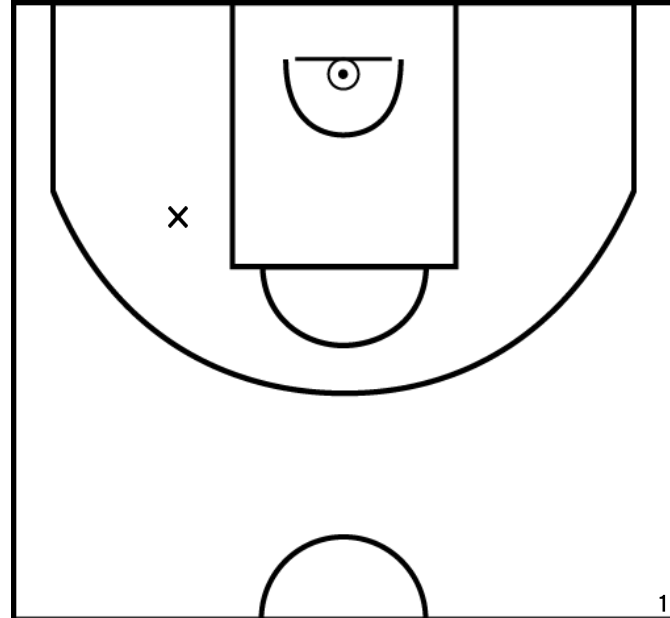


PÉRIODE 4

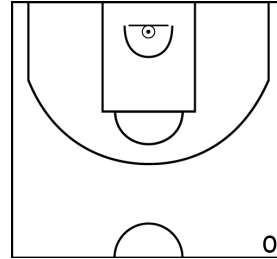


Rencontre: 4234 Date: 16/04/23 Heure: 14:00  
 Arbitre: PERROT A BENETEAU A

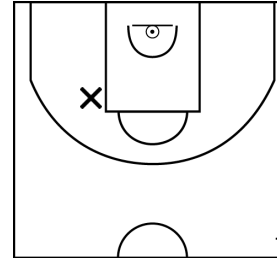
BERRIAU J. - IE - CTC POLE WEST NANTAIS - I.B.C. - INDRE BASKET CLUB - 3 (A)



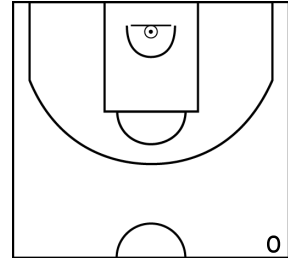
PÉRIODE 1



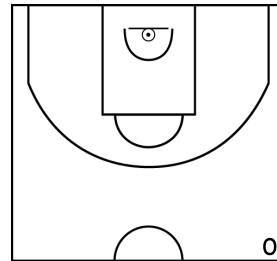
PÉRIODE 3



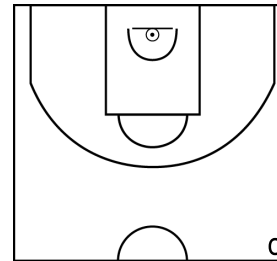
PROLONGATIONS



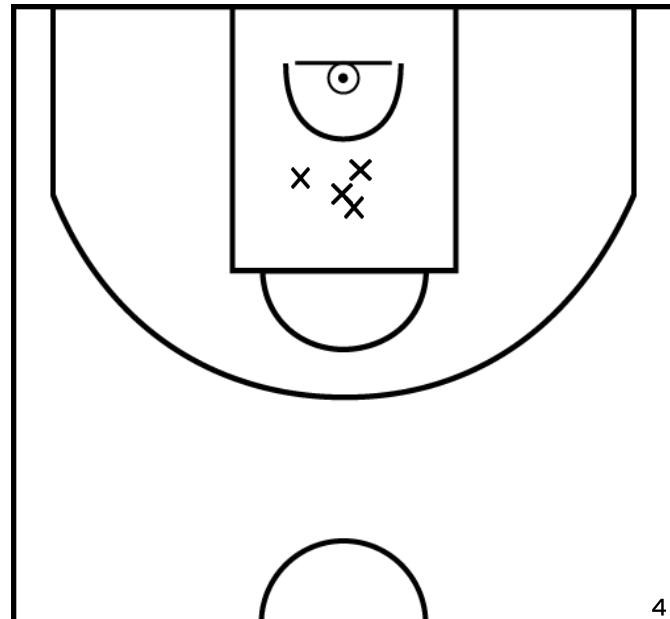
PÉRIODE 2



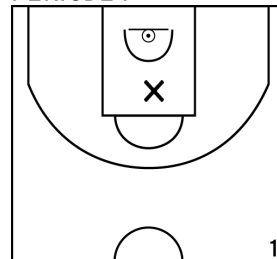
PÉRIODE 4



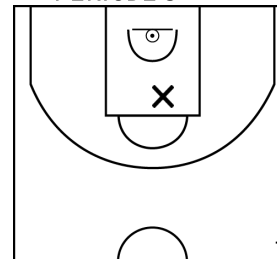
LEMONNIER L. - IE - CTC POLE WEST NANTAIS - I.B.C. - INDRE BASKET CLUB - 3 (A)



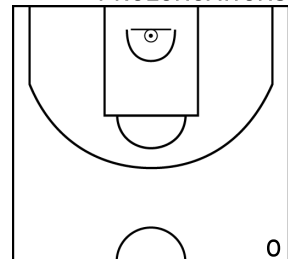
PÉRIODE 1



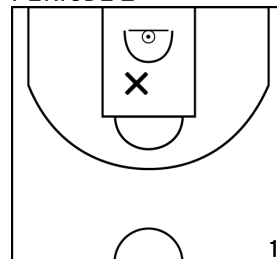
PÉRIODE 3



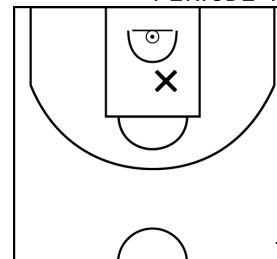
PROLONGATIONS



PÉRIODE 2

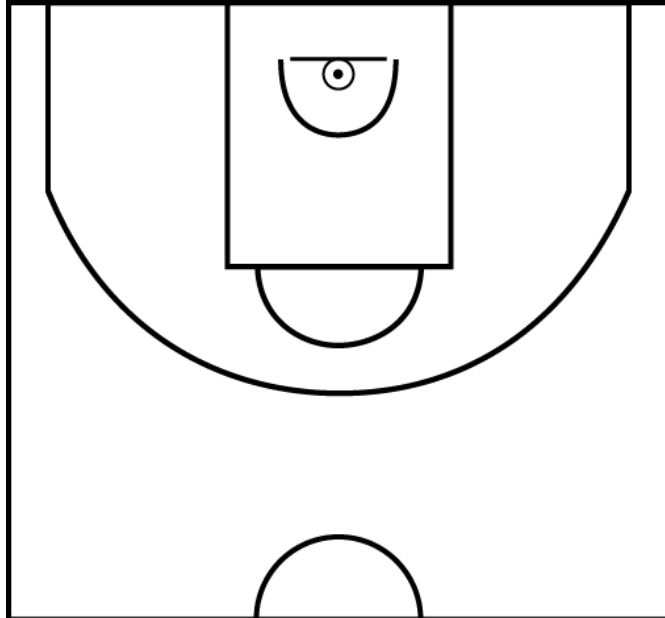


PÉRIODE 4

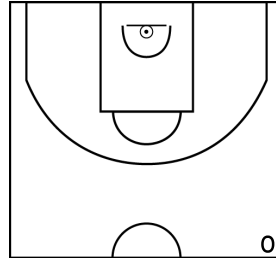


Rencontre: 4234 Date: 16/04/23 Heure: 14:00  
 Arbitre: PERROT A BENETEAU A

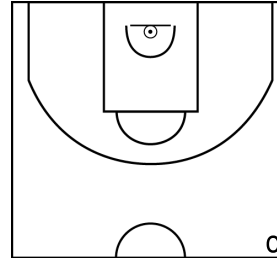
DESHAIS A. - IE - CTC POLE WEST NANTAIS - I.B.C. - INDRE BASKET CLUB - 3 (A)



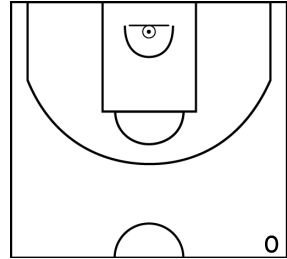
PÉRIODE 1



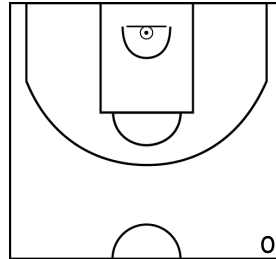
PÉRIODE 3



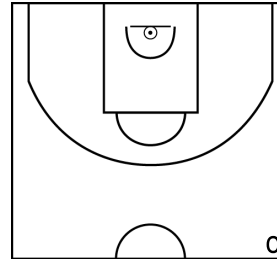
PROLONGATIONS



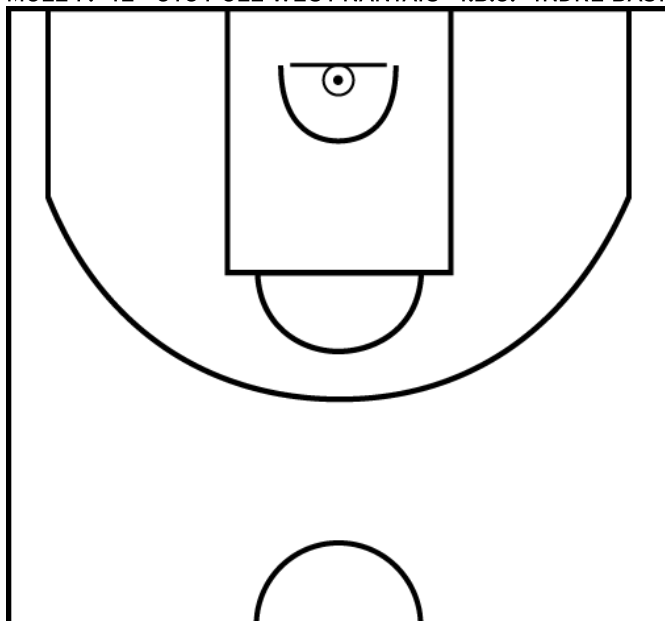
PÉRIODE 2



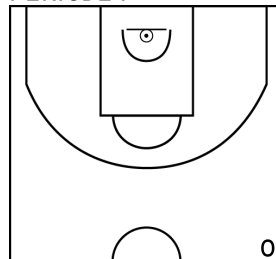
PÉRIODE 4



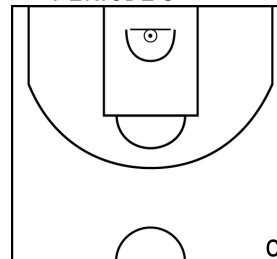
MOLÉ P. - IE - CTC POLE WEST NANTAIS - I.B.C. - INDRE BASKET CLUB - 3 (A)



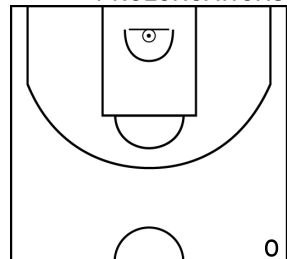
PÉRIODE 1



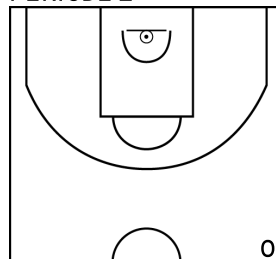
PÉRIODE 3



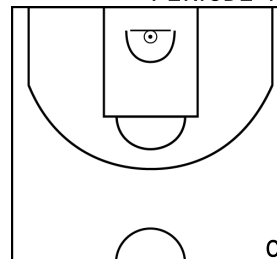
PROLONGATIONS



PÉRIODE 2

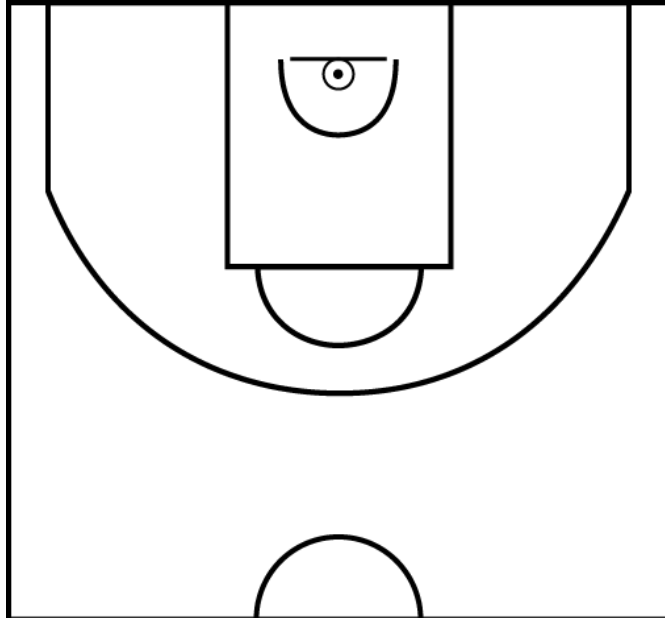


PÉRIODE 4

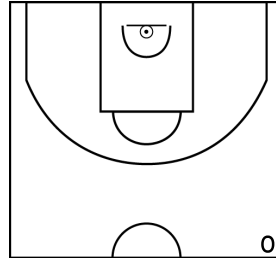


Rencontre: 4234 Date: 16/04/23 Heure: 14:00  
 Arbitre: PERROT A BENETEAU A

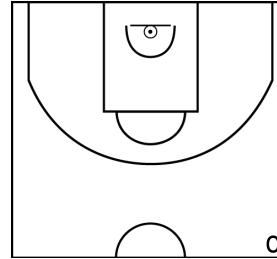
GUIGNARD T. - IE - CTC POLE WEST NANTAIS - I.B.C. - INDRE BASKET CLUB - 3 (A)



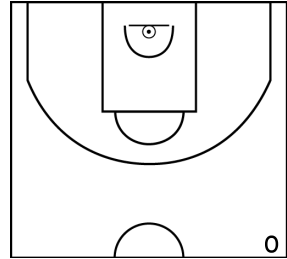
PÉRIODE 1



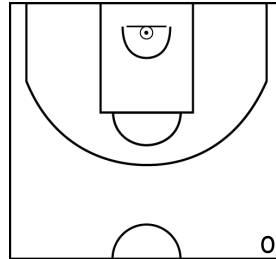
PÉRIODE 3



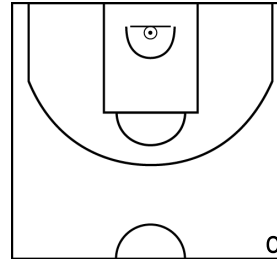
PROLONGATIONS



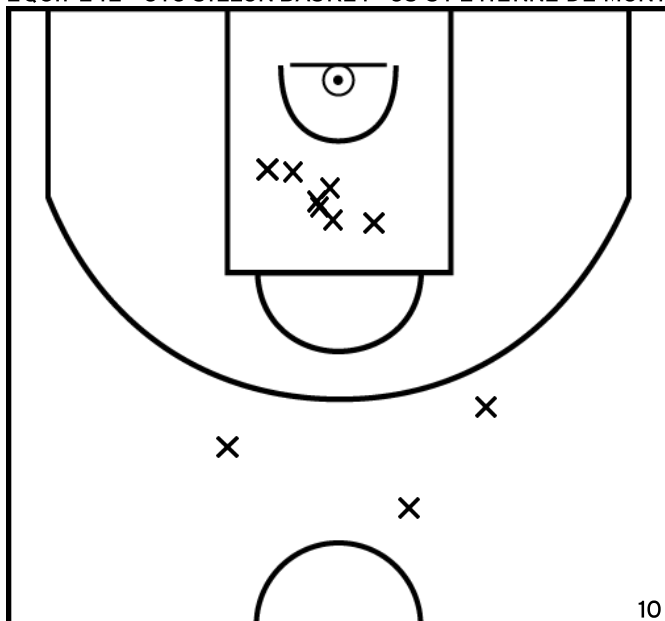
PÉRIODE 2



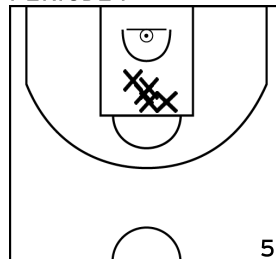
PÉRIODE 4



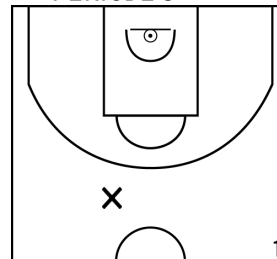
ÉQUIPE IE - CTC SILLON BASKET - JS ST ETIENNE DE MONTLUC - 2 (B)



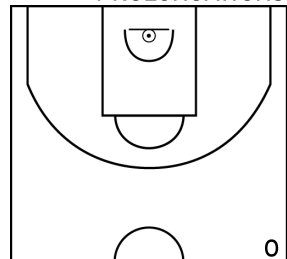
PÉRIODE 1



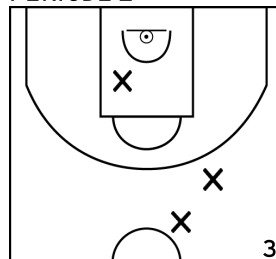
PÉRIODE 3



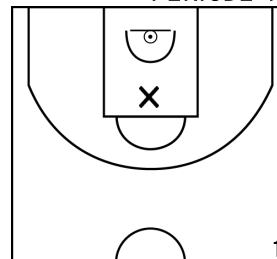
PROLONGATIONS



PÉRIODE 2

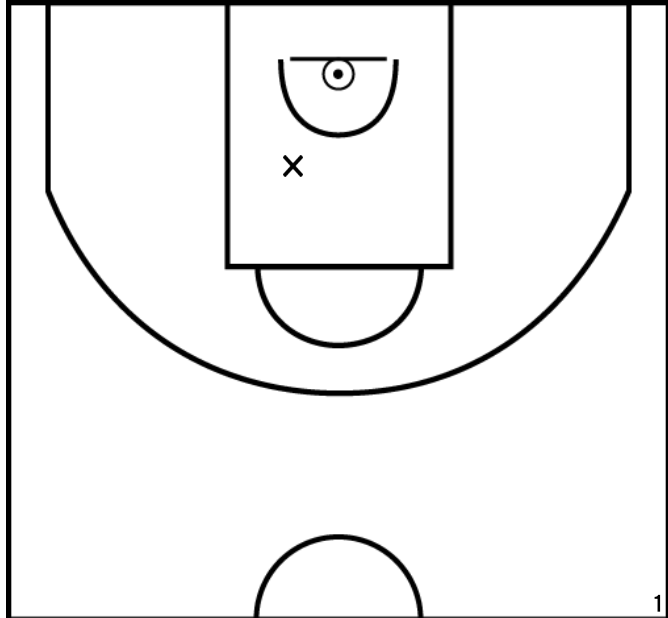


PÉRIODE 4

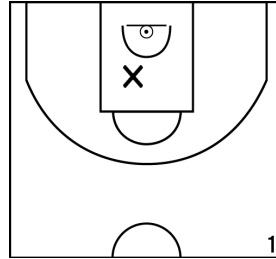


Rencontre: 4234 Date: 16/04/23 Heure: 14:00  
 Arbitre: PERROT A BENETEAU A

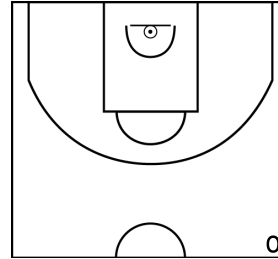
VIAUD P. - IE - CTC SILLON BASKET - JS ST ETIENNE DE MONTLUC - 2 (B)



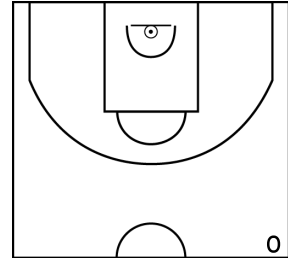
PÉRIODE 1



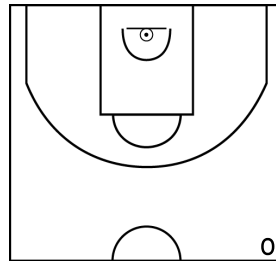
PÉRIODE 3



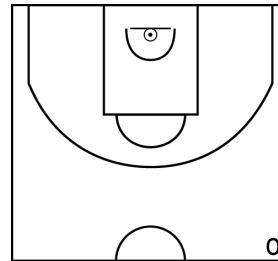
PROLONGATIONS



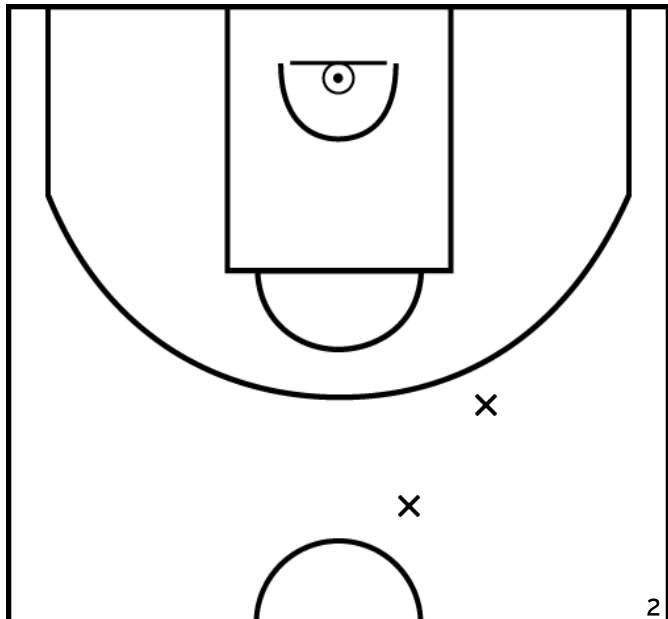
PÉRIODE 2



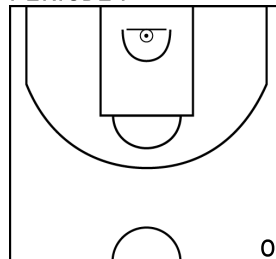
PÉRIODE 4



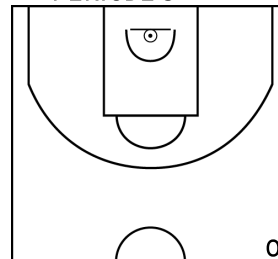
GLOTAIN Y. - IE - CTC SILLON BASKET - JS ST ETIENNE DE MONTLUC - 2 (B)



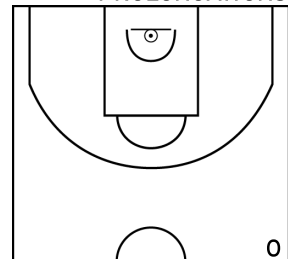
PÉRIODE 1



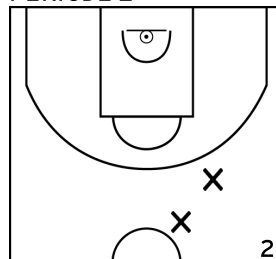
PÉRIODE 3



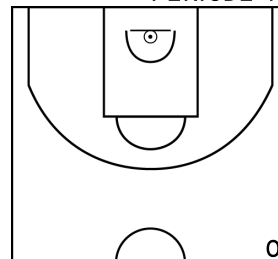
PROLONGATIONS



PÉRIODE 2

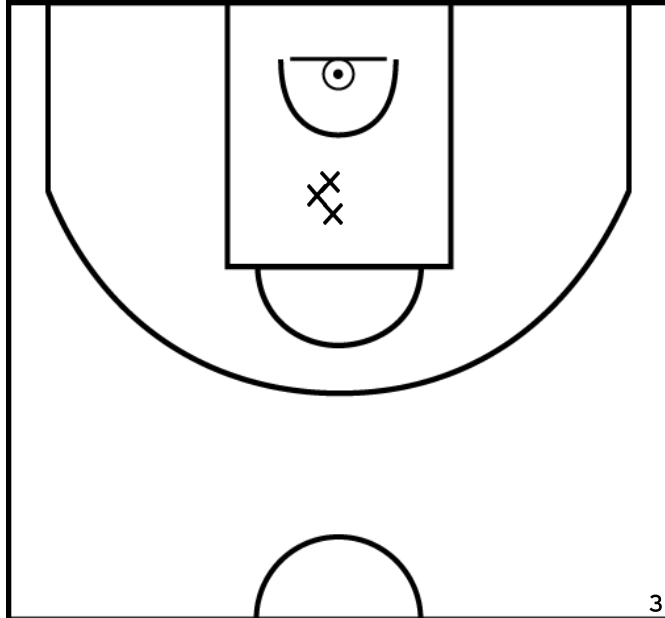


PÉRIODE 4

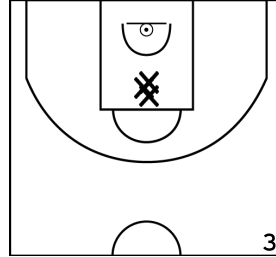


Rencontre: 4234 Date: 16/04/23 Heure: 14:00  
 Arbitre: PERROT A BENETEAU A

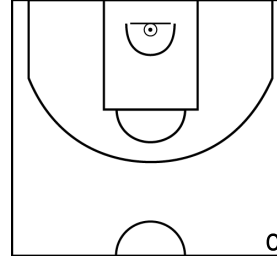
DESCHAMPS-MANDIN S. - IE - CTC SILLON BASKET - JS ST ETIENNE DE MONTLUC - 2 (B)



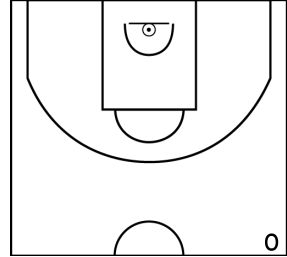
PÉRIODE 1



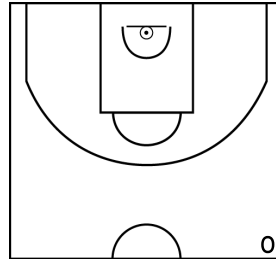
PÉRIODE 3



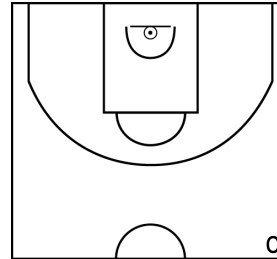
PROLONGATIONS



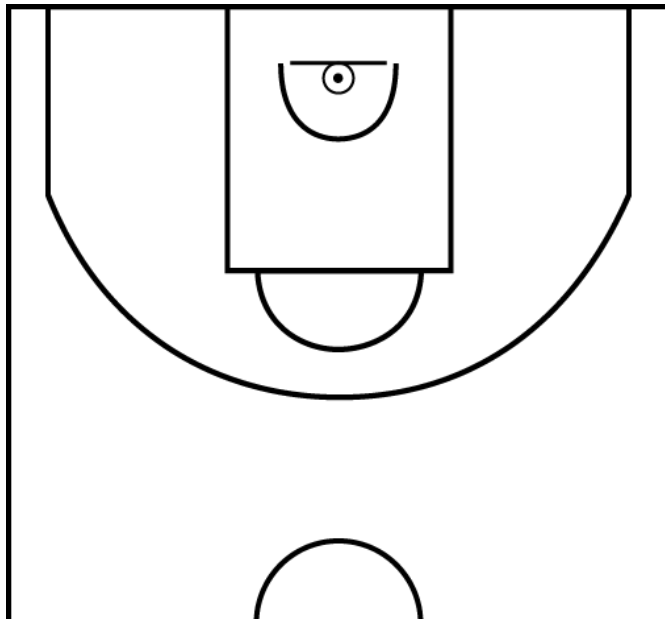
PÉRIODE 2



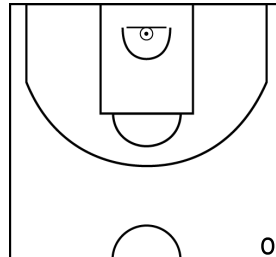
PÉRIODE 4



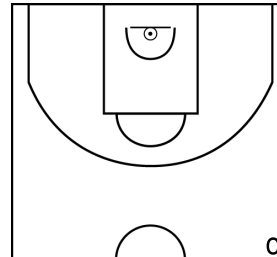
RACHELLI T. - IE - CTC SILLON BASKET - JS ST ETIENNE DE MONTLUC - 2 (B)



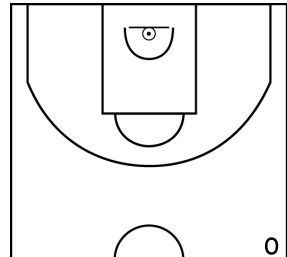
PÉRIODE 1



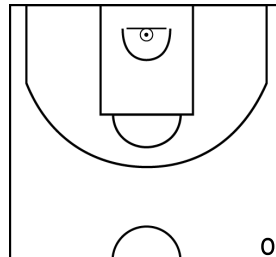
PÉRIODE 3



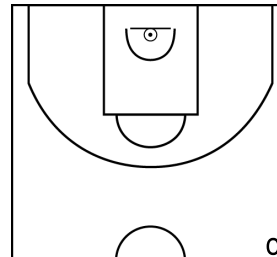
PROLONGATIONS



PÉRIODE 2



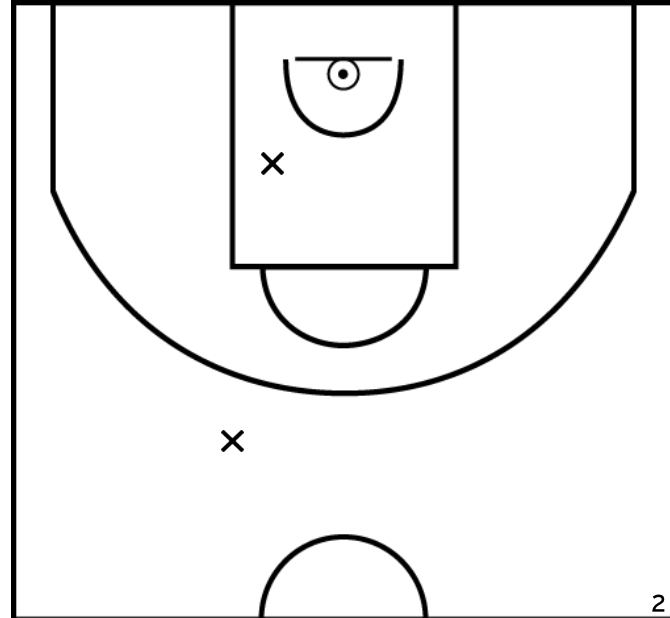
PÉRIODE 4



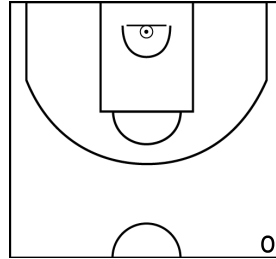


Rencontre: 4234 Date: 16/04/23 Heure: 14:00  
 Arbitre: PERROT A BENETEAU A

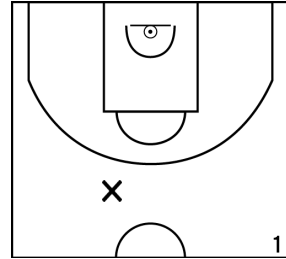
BEVAN R. - IE - CTC SILLON BASKET - JS ST ETIENNE DE MONTLUC - 2 (B)



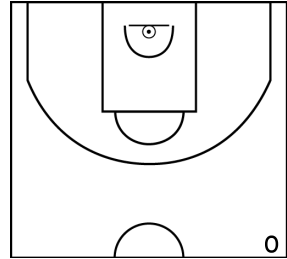
PÉRIODE 1



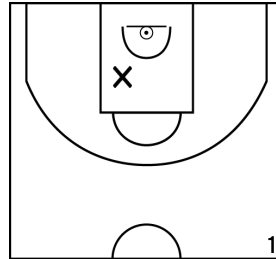
PÉRIODE 3



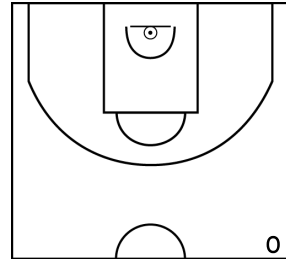
PROLONGATIONS



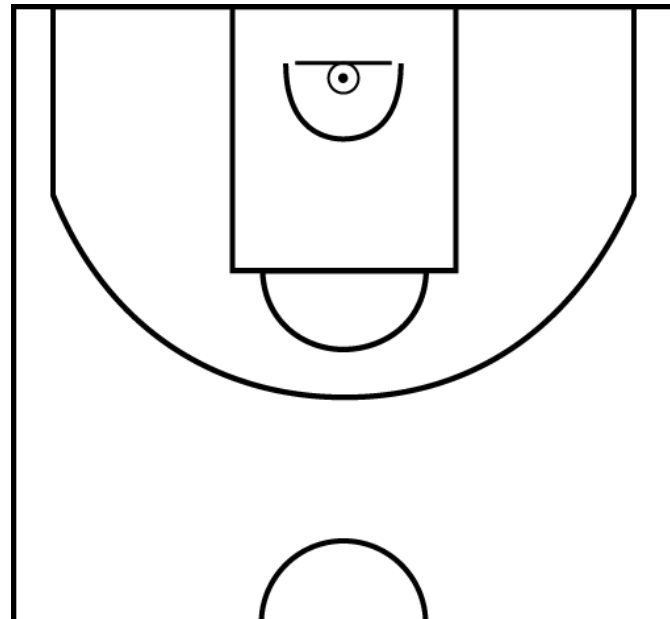
PÉRIODE 2



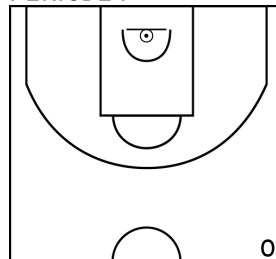
PÉRIODE 4



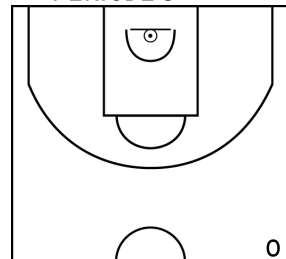
BONNIN N. - IE - CTC SILLON BASKET - JS ST ETIENNE DE MONTLUC - 2 (B)



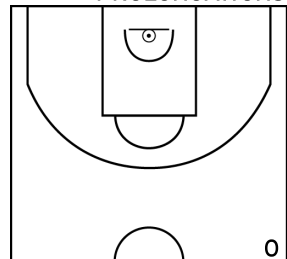
PÉRIODE 1



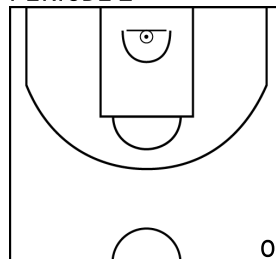
PÉRIODE 3



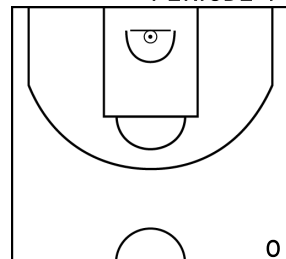
PROLONGATIONS



PÉRIODE 2

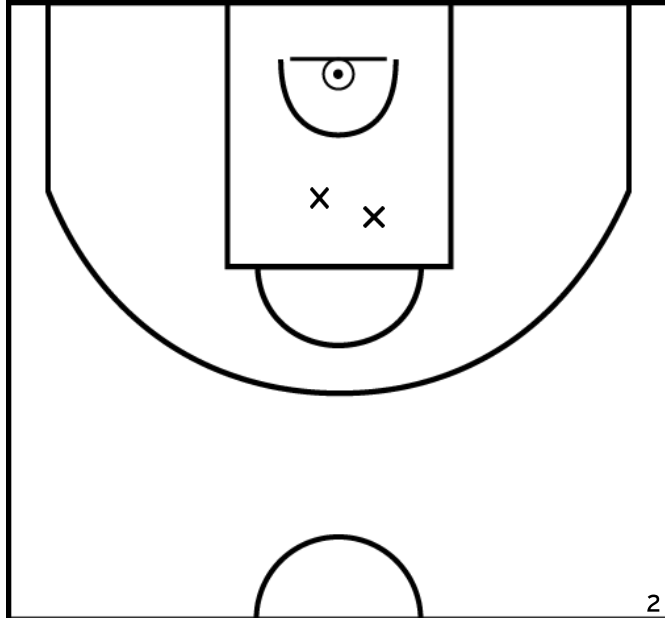


PÉRIODE 4

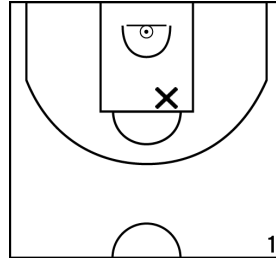


Rencontre: 4234 Date: 16/04/23 Heure: 14:00  
 Arbitre: PERROT A BENETEAU A

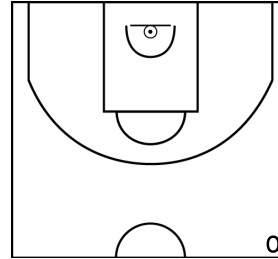
GRAYO E. - IE - CTC SILLON BASKET - JS ST ETIENNE DE MONTLUC - 2 (B)



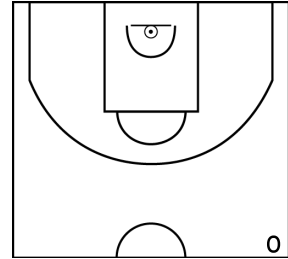
PÉRIODE 1



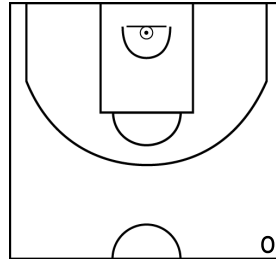
PÉRIODE 3



PROLONGATIONS



PÉRIODE 2



PÉRIODE 4

